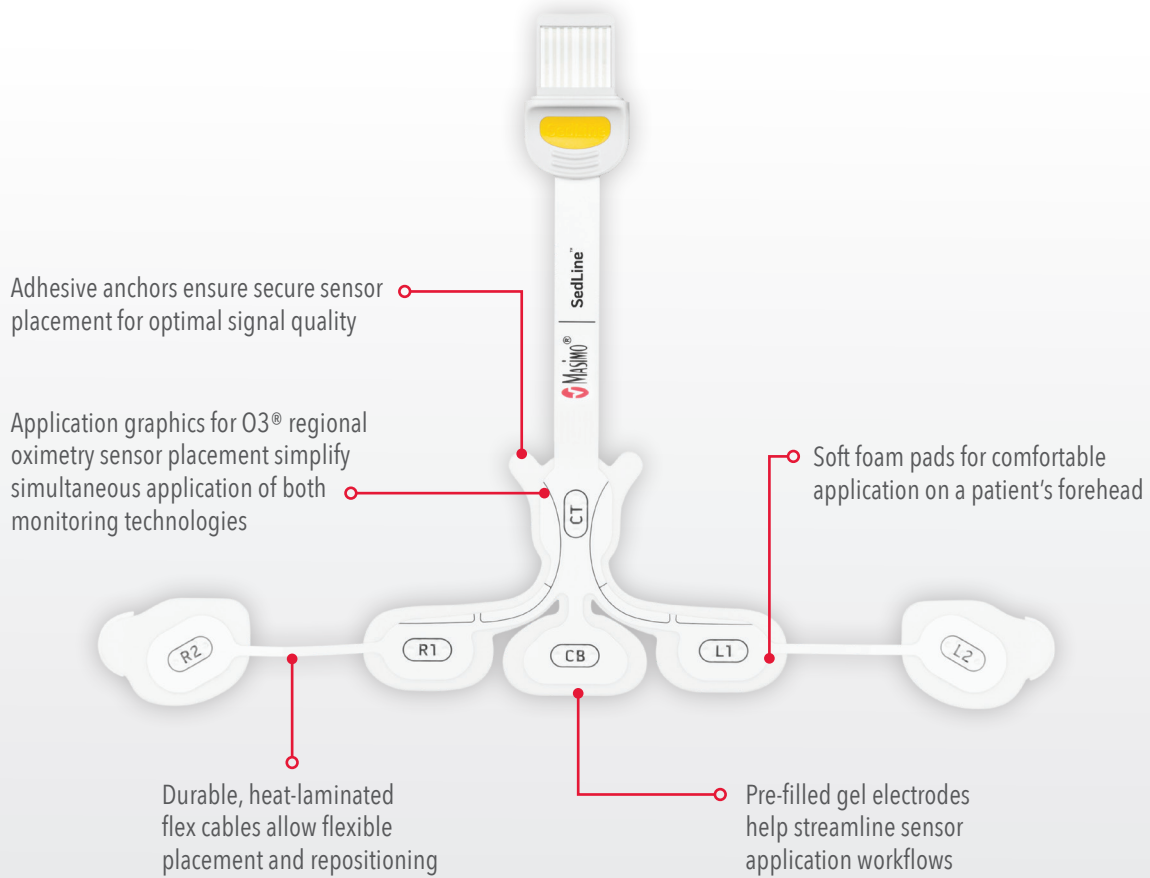


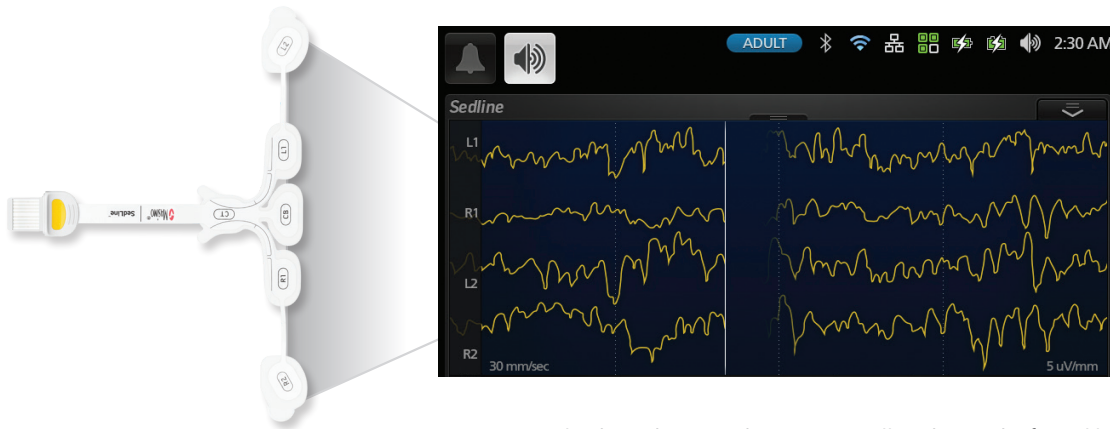
RD SedLine® EEG Sensor

Flexible, Comfortable Sensor with Four Leads of EEG for Next Generation SedLine Brain Function Monitoring



A More Complete Picture Starts with More Complete Data

Next Generation SedLine Brain Function Monitoring helps clinicians monitor the state of the brain under anesthesia with bilateral data acquisition and processing of four leads of electroencephalogram (EEG) signals.



Four active EEG leads on the RD SedLine sensor collect data in the frontal lobe

Next Generation SedLine can be used simultaneously with O3 Regional Oximetry on the Root® platform for a more complete picture of the brain.



The RD SedLine sensor is designed for seamless, simultaneous application with O3 sensors

RD SedLine Sensor Specifications

Application Site	Forehead
Active Channels	4
Active Electrodes	(R1, R2, L1, L2)
Ground Electrode	CB
Reference Electrode	CT
Duration of Use	24 hours
Latex Content	Does not contain natural rubber latex
Storage Temperature	10–32° C

Caution: Federal (USA) law restricts this device to sale by or on the order of a physician. See instructions for use for full prescribing information, including indications, contraindications, warnings, and precautions.

Masimo U.S.
Tel: 1 877 4 Masimo
info-america@masimo.com

Masimo International
Tel: +41 32 720 1111
info-international@masimo.com

