

MS-2011

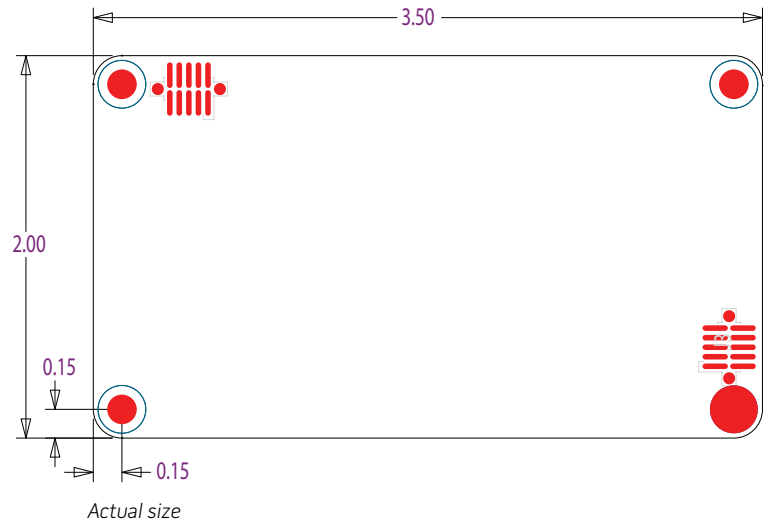
Masimo SET OEM Board

BOARD DIMENSIONS



Board Dimensions	Typical
Width	2.0 inch
Length	3.5 inch
Thickness	0.062 inch
Top Height	0.2 inch
Bottom Height	0.1 inch
Mounting Hole \varnothing	0.125 inch

Note – Connector and Mounting Hole locations are the same as MS-5, MS-7, MS-11.

BOARD OUTLINE



CONNECTOR DATA

Connector Description	Power and Communications Connector	Sensor Connector
Number of Pins	10	10
Configuration	2 rows of 5	2 rows of 5
Angle	Vertical	Vertical
Pin Grid	0.050 inch	0.050 inch
Manufacturer Part #	Samtec SFM-105-02-S-D-A 	Samtec SFM-105-02-S-D-A 

DC POWER REQUIREMENTS

	Typical	Maximum
Input Voltage	+5V	$\pm 0.25V$
Line/Load Regulation		1% p-p
Avg. Power	125 mW	275 mW

SERIAL INTERFACE

Bit Rate (fixed)	9600 bps or 19200 bps
------------------	-----------------------

To find out more about the MS-2011 Board
call 949-297-7000 or visit www.masimo.com

©2009 Masimo Corporation. All rights reserved.

