

Quick Start Guide



What's in the box?



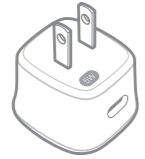
Sensor



Sensor Magnetic Charge Cable and Cable Clip



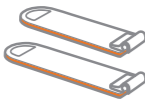
Medium Boot (Size 4 Strap Pre-Attached)



2 X 5W Charge Adapters



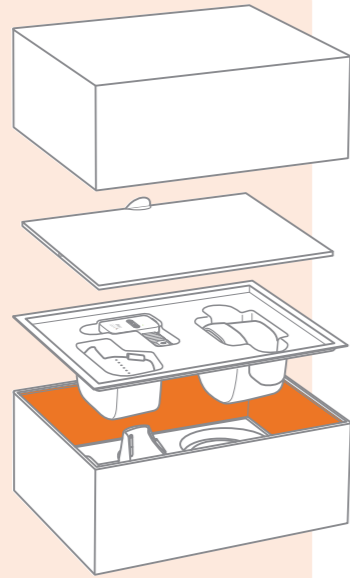
Small Boot (Size 3 Strap Pre-Attached)



Size 1 and Size 2 Straps



Hub

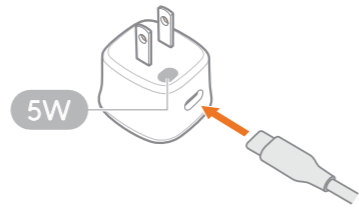


Hub Power Cable

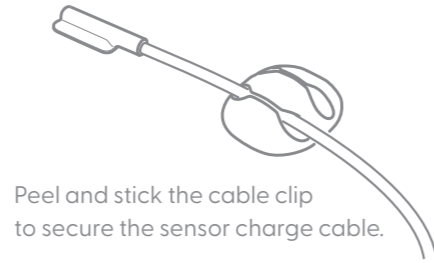
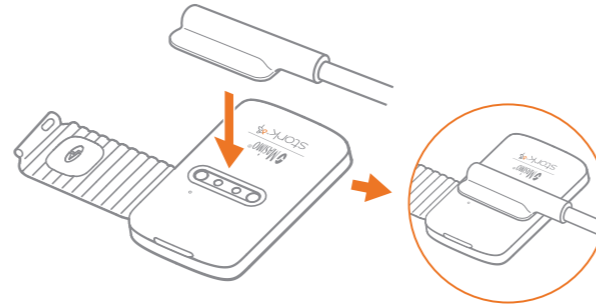
Not intended for use as a medical device or to replace a medical device. Do not use it to diagnose, cure, treat, alleviate, or prevent any disease or health condition.

Charge the sensor

Plug the Sensor Magnetic Charge Cable into the 5W power adapter.



Connect the magnetic end of the cable to the sensor. Fully charge the sensor before use.



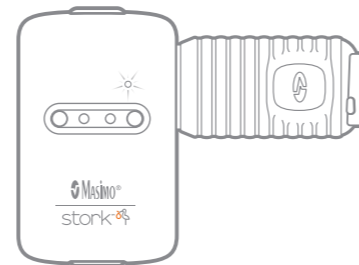
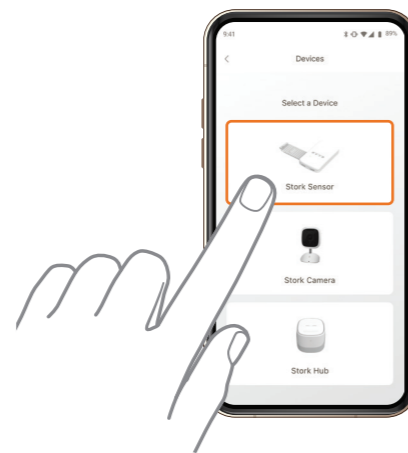
Peel and stick the cable clip to secure the sensor charge cable.



The sensor is fully charged when the LED turns white.

Pair the sensor to the app

Download the Stork app and follow instructions.



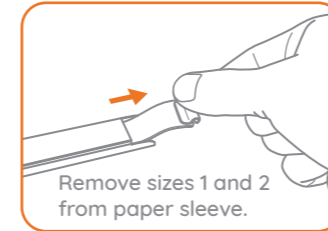
The app screens shown in this document might differ from the actual ones displayed in the app.

Add straps to sensor and boot

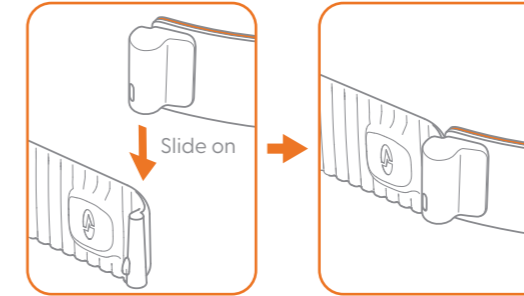
Size 1 strap (for newborn foot)



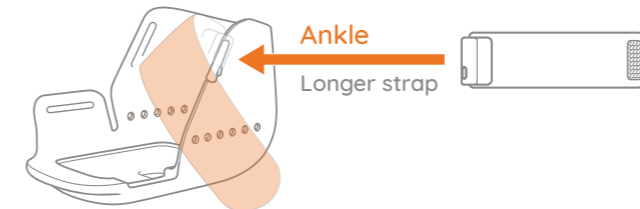
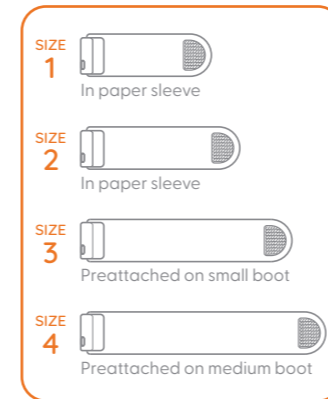
Slide on



Remove sizes 1 and 2 from paper sleeve.

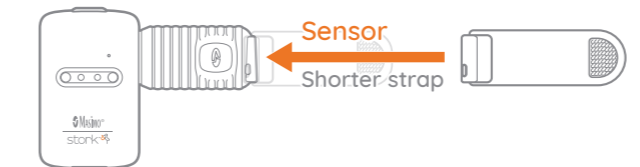


Slide on



Ankle

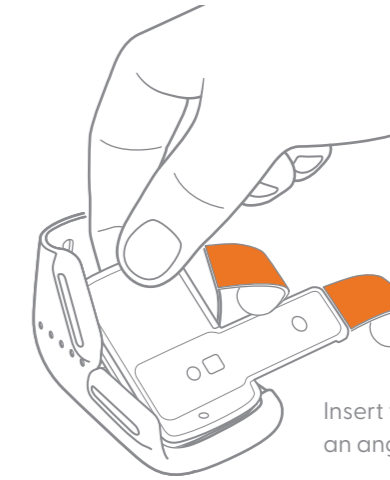
Longer strap



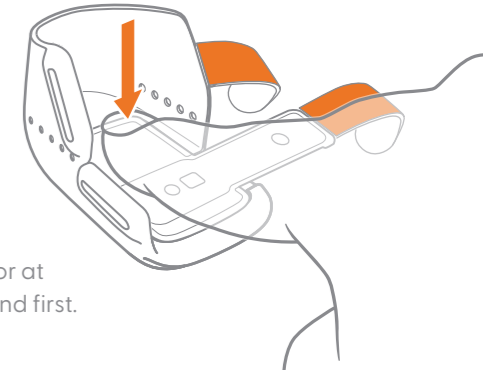
Sensor

Shorter strap

Insert Sensor Into Boot

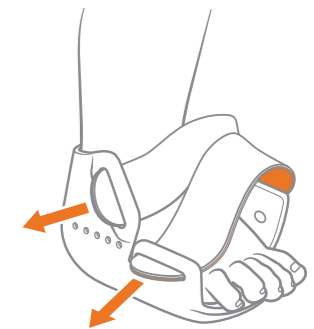


Insert the sensor at an angle, toe end first.



Press down to secure the sensor. The sensor should sit flush in the boot.

Apply Boot to Either Foot



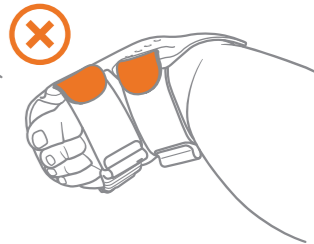
Check the Strap Length



Too long (Velcro not on fabric)

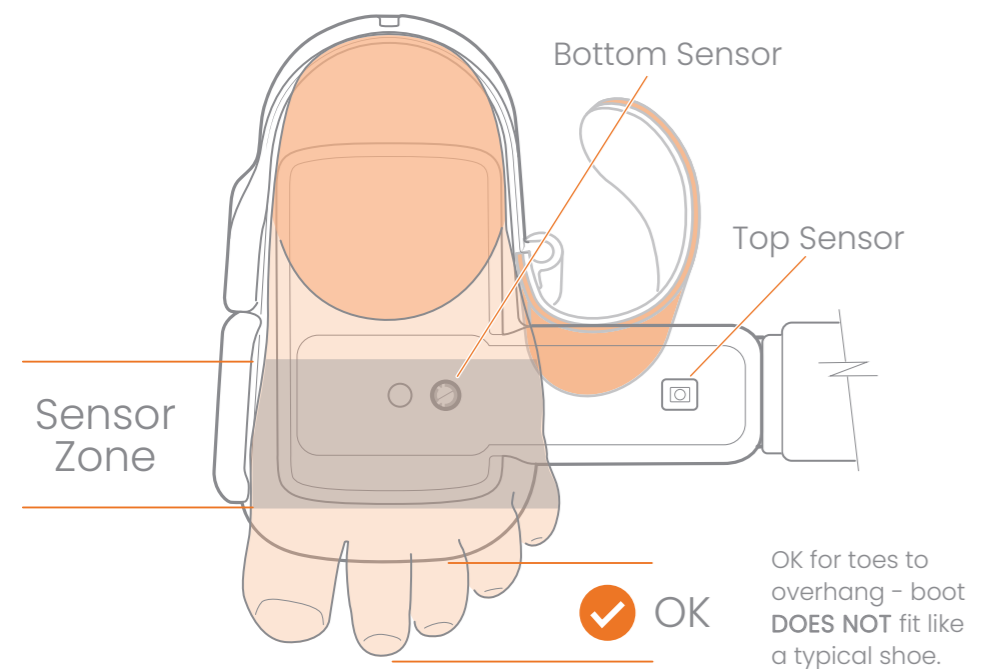


Perfect!



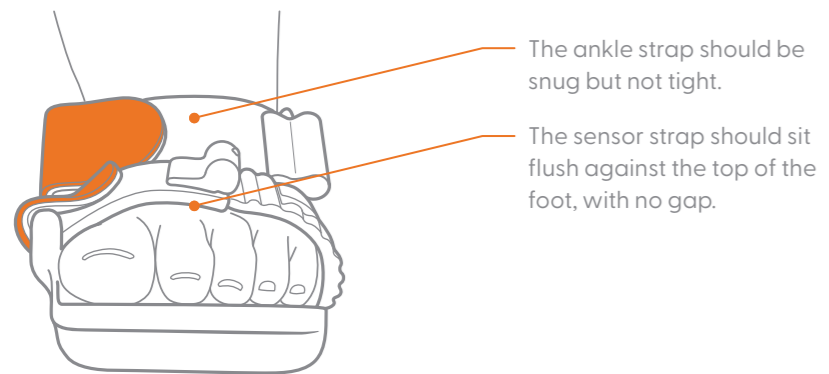
Too short

Boot Sizing (Using Small Boot As Example)



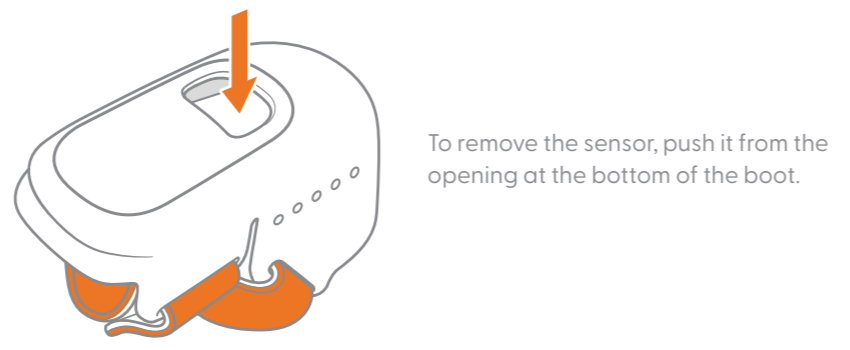
IMPORTANT NOTE
Make sure all sensors are making good contact with the baby's skin to ensure correct measurement.

Strap Tightness



Boot and sensor maintenance

Remove Sensor



To remove the sensor, push it from the opening at the bottom of the boot.

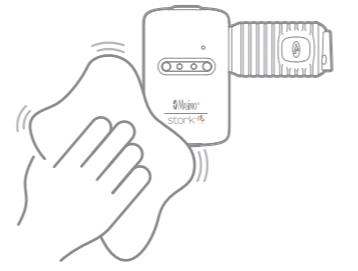
Cleaning Sensor and Boot

Remove the sensor and place just the boot (and the straps if desired) in the washing machine.



Do not put the sensor in the washing machine

Dampen a cloth with water to wipe the components of the Stork System (sensor is shown in the example). Bleach wipes or 70% isopropyl alcohol can also be used. Do not use household cleaning agents.



Set up the hub

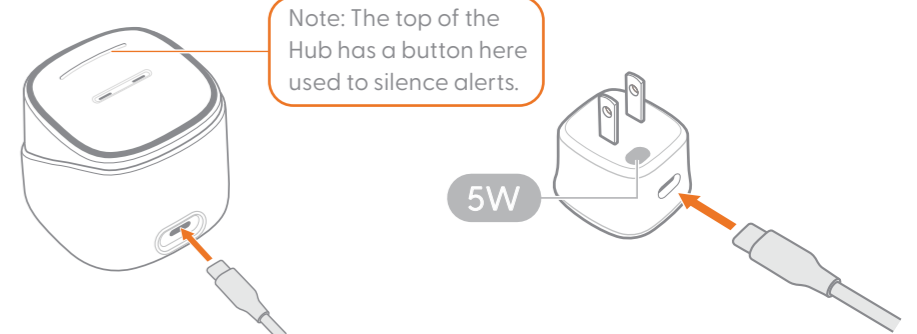
Place the hub on top of a nightstand, side table or a cabinet in the same room as the baby's crib to ensure a strong connection.



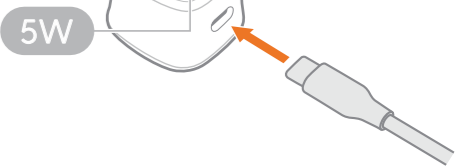
OWNER'S MANUAL
Refer to the online manual for other functions, information, and operation details.
masimostork.com/vitals-user-manual



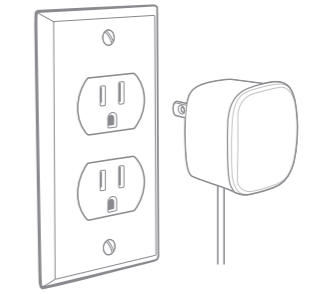
Attach USB Cable to Hub



Plug the hub power cable into the back of the hub.



Plug the other end of the hub power cable into the 5W power adapter.



Plug the hub into a wall socket.

Pair the hub to the app

Use the same app you downloaded for pairing the sensor.

